

GGT™

GERMAN GEO TEXTILE

FOOTING



ATV Basic 57 GROOMER

Made in Germany

The Professional Maintenance Tool
for leveling, loosening, mixing and grading all kinds of
equestrian riding surfaces.

Operation and maintenance instructions for:

ATV Basic 57 Groomer

Working widths of 4.75 feet



Safety

The **ATV Basic 57 Groomer** has been built according to the latest regulations, however, threats to people and machine can still occur if:

- the machine is not used as described in the instruction.
- the machine is used by unqualified or uninstructed individuals.
- unauthorized changes to machine have been made.
- the safety aspects are not followed.

Individuals who work with the machine or who do maintenance work on the machine must read the safety instructions before working with or on the machine and must follow them.

Besides the safety aspects included in this instruction manual, the following aspects apply.

- general safety instruction
- USA-specific regulations

Safety Symbols

Safety symbols have been placed in visible places on the machine. Damaged or unreadable symbols must be replaced.



1. This symbol has been placed on the box of the machine behind the engine. Read the instructions carefully before working with or on the **ATV Basic 57 Groomer!**



2. Attention Crushing



3. Attention Heavy Roller & Rotating Parts



4. Maximum Speed

Safety Aspects

- The operator must obey all safety aspects; the diagrams in this instruction manual, as well as safety symbols on the machine at all times. These procedures must be adhered to in the correct order.
- While working with the **ATV Basic 57 Groomer**, the operator must make sure that he has a good overview of the terrain he is working on as well as on the machine itself. The operator also must make sure that he will not become distracted in any way and always act according to the circumstances.
- The operator must check before moving the **ATV Basic 57 Groomer** for that no people or animals are within operating range.
- It is prohibited to use the **ATV Basic 57 Groomer** for the transportation of people or animals.
- Eye protection must be worn at all times while working with the **ATV Basic 57 Groomer**.
- Operator: Do not wear loose fitting clothes. Footwear must be worn at all times.
- All maintenance work, repairs or trouble shooting or any other work mentioned in the instruction manual must be completed by a qualified technician.
- In the event the operator finds a defect of any kind on the **ATV Basic 57 Groomer** he/she will be obligated to inform a technician immediately.
- We advise against using the machine on hills with a slope of more than 10 degrees.
- Use the machine only on private property. Do not drive on streets or on pavements.

Emergency Situations

An emergency situation is where a danger exists for humans, animals or machine. In an emergency situation, the operator must stop the towing device and shut off the engine.

Check if there are there any damages to parts of the machine or the machine itself by conducting a detailed inspection.

Only through this inspection, secure work can be completed after an emergency situation.

Caution! Safety Information

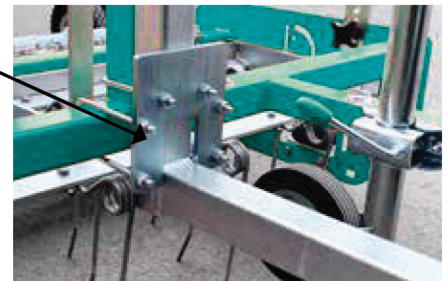
- Please do not stand next to the **ATV Basic 57 Groomer** during operation.
- Riding on the **ATV Basic 57 Groomer** is strictly prohibited.
- Never place yourself in the swing area of the **ATV Basic 57 Groomer**, as a fatal danger could occur.
- Before leaving the **ATV Basic 57 Groomer**, please secure the Groomer against rolling.



Operation instruction for the ATV Basic 57 Groomer

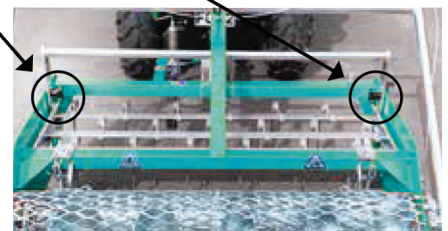
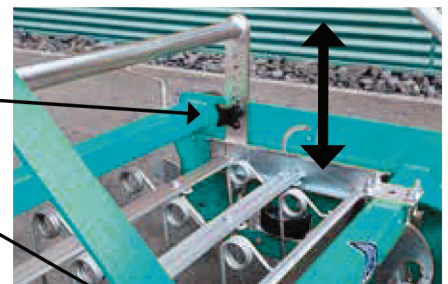
Before beginning operation, adjust the mount unit of the traction and **ATV Basic 57 Groomer** properly and fix it by using the clamping screw.

By turning of the fixture, that means longitudinal tube and hitch above respectively under the basic frame also very low-lying hitches can be used.



Adjusting the working depth of the tines!

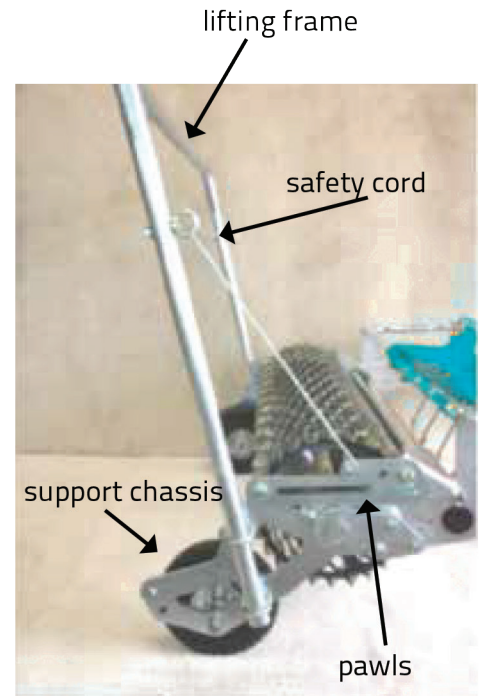
The tine depth / tine frame can be adjusted in height by loosening and repositioning the fixing screws. Attention: then tighten again!



Using the hoisting drive!

Caution – check before pulling the ratchet brace position and ensure that they are properly locked into the fixing position.

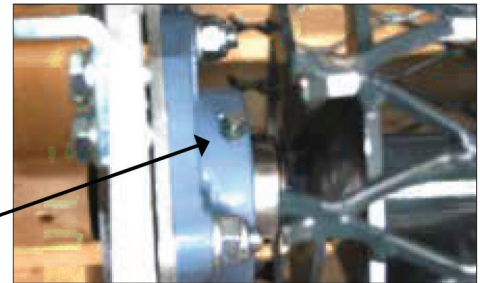
Before engaging of the locks pull smoothly the lifting device and release straight after the ratchet brace by towing the safety rope.



Maintenance instruction ATV Basic 57 Groomer

Regular care and maintenance are important for a long service lifetime and a good working quality of the **ATV Basic 57 Groomer**.

Maintenance of the **ATV Basic 57 Groomer** does include regular washing, that makes more efficient maintenance possible.

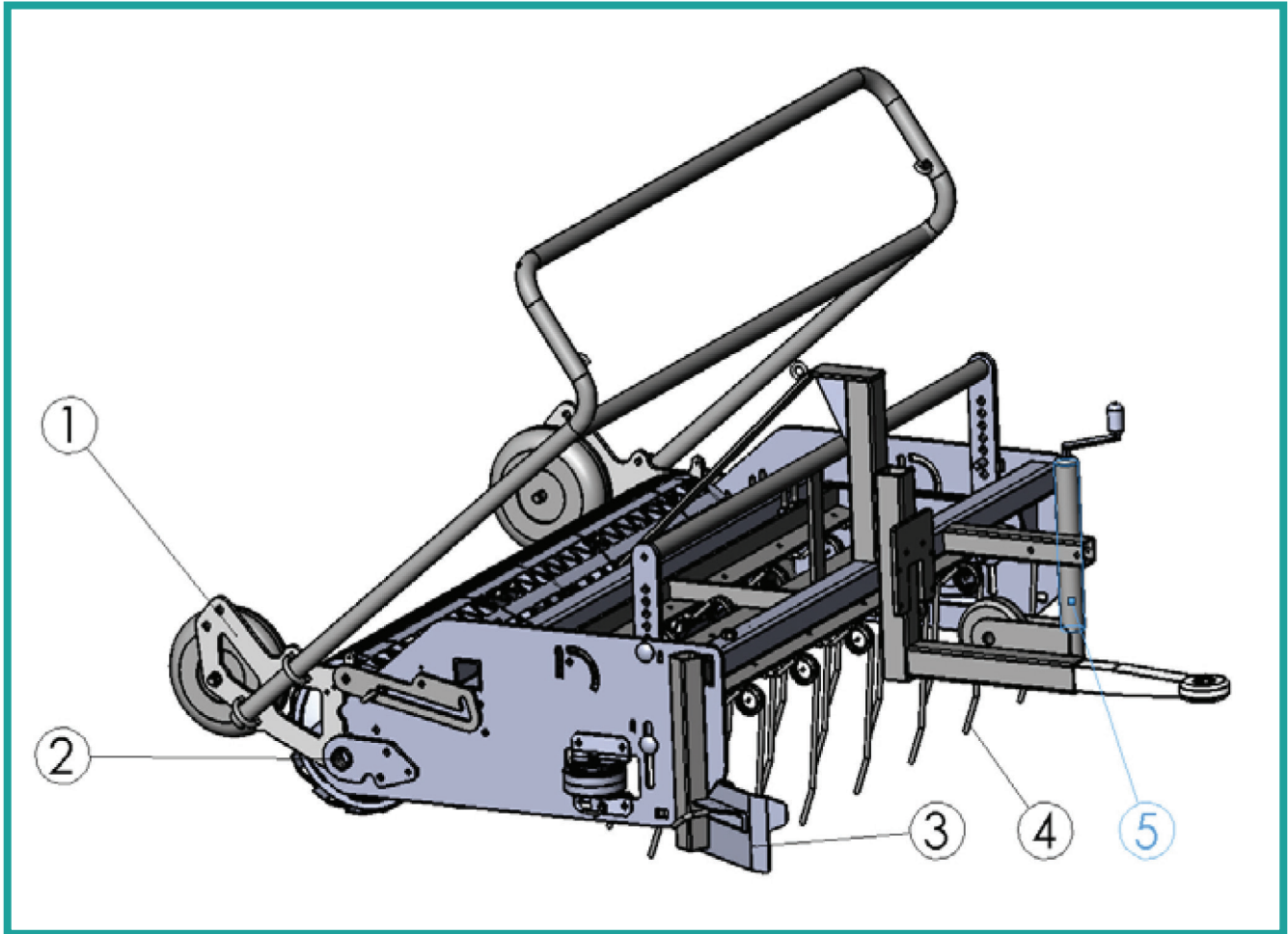


For maintenance, lubricate the **LOCATION MARKED NUMBER 1** lubrication points every 25 working hours.

Wash the running gear after checking and if required lubricate the unit. You will need to check the ball coupling and the draw-bar at the towing vehicle regularly.

Notes:

Spare parts list **ATV Basic 57 Groomer 4.75 feet**



Pos.	Quantity	No. Type	Designation
1	2	Art.Nr 4372	Tires
2	2	UCF 208	Bearing
3	1	G006-0005	Pusher
4	16 Stk.= 1,25m	013-0013	Spring steel tines
4	18 Stk.= 1,45m	013-0013	Spring steel tines
5	1	Art.Nr.4647	Stabilizer

The Driving Speed:

You will need to adapt to the driving speed, so that the **ATV Basic 57 Groomer** can smooth any unevenness from the soil. Do not drive too fast, as the blade cannot be deposited in the soil effectively and unevenness can not be graded.

The perfect speed is between 3 and 7 miles per hour. On wet surfaces you should drive 7 miles per hour and on dry surfaces slower.

Please note that the spring steel tines need an ideal speed to complete the job effectively. If not achieved the tines will start to whisk.

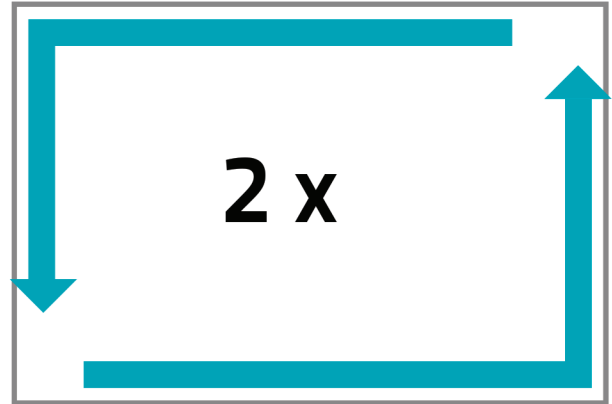
The Driving Directions:

The driving direction is also important, so that the ground will not be uneven. If the soil is not uneven, you will drive as following: Start driving at the outside lines two times. Then turn towards the inner lines along the long side as wide as one track would be. If the ground is higher outside, you can push it back with the **ATV Basic 57 Groomer** to the inner side, when driving along the short side.

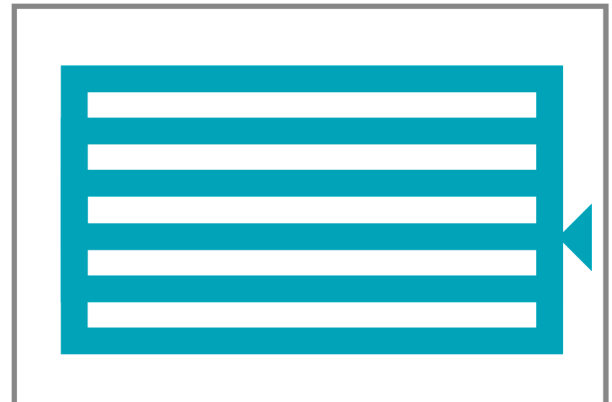
To grade waves in the ground you need to drive in spiral forms, as shown in picture no. 3.

Attention: Always start with driving along the lines outside as it is shown in picture 1. When driving long circles and round pens, drive ellipse ways regularly.

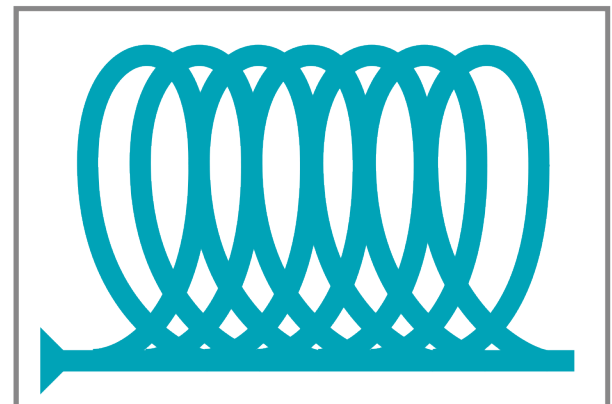
1.



2.



3.





Polysols, Inc.
851 Simuel Road
Spartanburg, SC 29301 USA

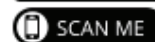
Call: (864) 579-4484

www.ggtfooting.com
Email: ggt-footing@polysols.com



Watch Groomer
Videos On
Our Website

Visit Our Website



Follow Us Online

