

By accepting our offer and ordering our product, you are acknowledging acceptance of these terms.

GGT-Footing is composed of chopped Geo-Textiles and Fibers. These materials are compressed into 300+ pound bales that are bound together with three metal wires (*Fig. 1*). The bales are stacked on wooden pallets, two bales wide and 3 bales tall, totaling 6 bales per full pallet. Then each pallet is stretch film wrapped to keep them together. On average, each complete skid weighs between 1,800 – 2,500 lbs, (1 TON+) and is around 7-1/2' tall (*Fig. 2*). *Fig. 2a* is a picture of our P41 ¾" Fiber in gaylord boxes (average 1000#/box). Groomers vary in size, the 57" groomer is the only groomer that will fit on a liftgate, all others, a liftgate is not possible, please discuss shipment in detail with your sales representative.



Fig. 1. Close up wires.



Fig. 2. A complete footing pallet.



Fig. 2a. P41 fiber pallet (2 boxes)



Fig. 3. 28' Pup Trailer with Lift Gate



Fig. 4. Pallet Jack

As you can see, these skids can be very large (48"W x 58"D x 92"T)! It is important that you fully understand what to expect at delivery and make arrangements for accepting your order. This ensures a smooth and successful process. Please let us know if delivery will be to a rural area, on a dirt road or an area restricted to tractor trailers as this could be a challenging delivery. Due to liability reasons, the truck

driver is only required to transport the product from our facility to yours and is not expected to unload. This means that you will need to have someone on site and prepared with the necessary equipment to unload it. Most residential deliveries will have a delivery appointment, meaning that the trucking company will call you to coordinate a date and time. A Lift Gate Service can be requested. A Lift Gate (LG) is a platform that is attached to the rear of the truck and is used to lower heavy items to ground level (Fig.3). This is very helpful if there is not a loading dock at the delivery site. This service will also include a pallet jack, shown in Fig. 4, for moving the product from inside the trailer to the lift gate. If you are receiving an LTL (Less than Truck Load) with a Lift Gate, then the truck driver will place the pallets on the LG with a pallet jack and lower them to the ground for you. At this point, you will need to be able to get them from the LG to your staging area or arena. You will need to make sure you have a forklift or a tractor with forks (Figs. 7) to get the pallets from the lift gate to your staging area. Make sure your equipment is rated to lift at least 2,500 Pounds. If your order is over 16,000 lbs. it is now considered a Full Truck Load (FTL) and it will ship via a 53' Dry Van (Fig. 9) or flatbed (Fig.8). A flatbed trailer is an option if you choose. Please speak with your sales representative regarding this option as we need to know when the order is placed if you would like this option. **A FTL will not provide a liftgate or pallet jack. You will have to provide your own pallet jack.**



Fig. 6. Forklift

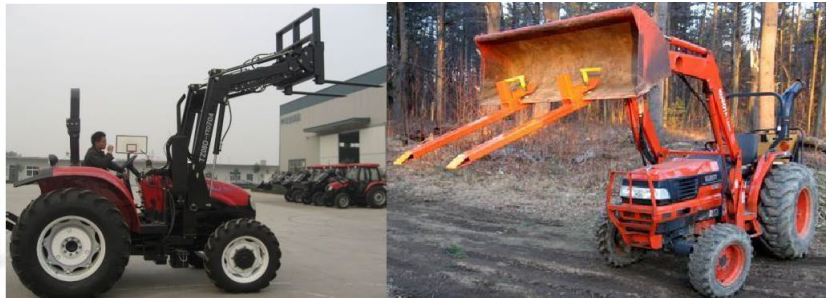


Fig. 7. Tractors with Fork attachments.



Fig. 8. Flatbed trailer



Fig. 9. 53' Dry Van

Once your order arrives, please make note of any damage during transport and contact your salesperson immediately. Note any damage on the carriers POD (Proof of Delivery). This ensures we can file a damage claim, if necessary. A damage claim MUST be filed within 5 days of delivery.

If you are concerned about your ability to accept this type of delivery, please give us a call. We will work together to determine a solution and make sure you are properly prepared. We look forward to working with you!

Sales: Cynthia Keating (Director of Sales): **864-804-0011**; Barb Diploma (National Retail Sales Mgr): **864-804-8664**

Office/Logistics: Kim Skipper: **864-579-4484 x103**

