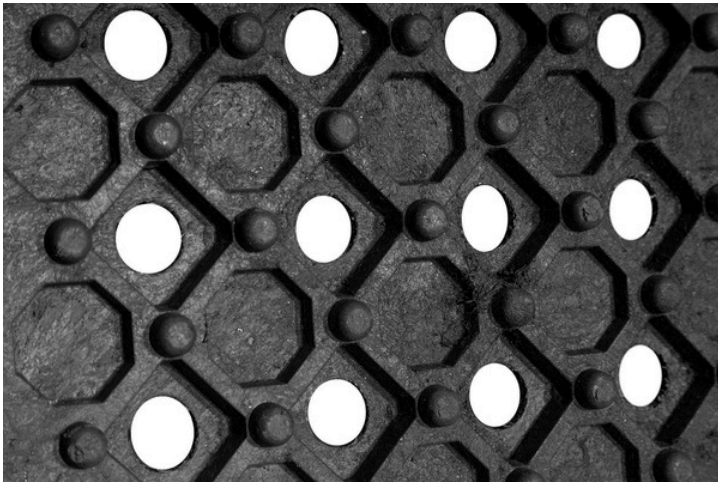


Arena Base Mats Installation Guide



Front

Can be used on: existing gravel or clay bases, concrete or bitumen surfaces, and meadows or compacted soil.

GGT Footing matting systems ensures durable drainage and water dispersion, stability, and separation of the top and ground layer in your arena.



Back

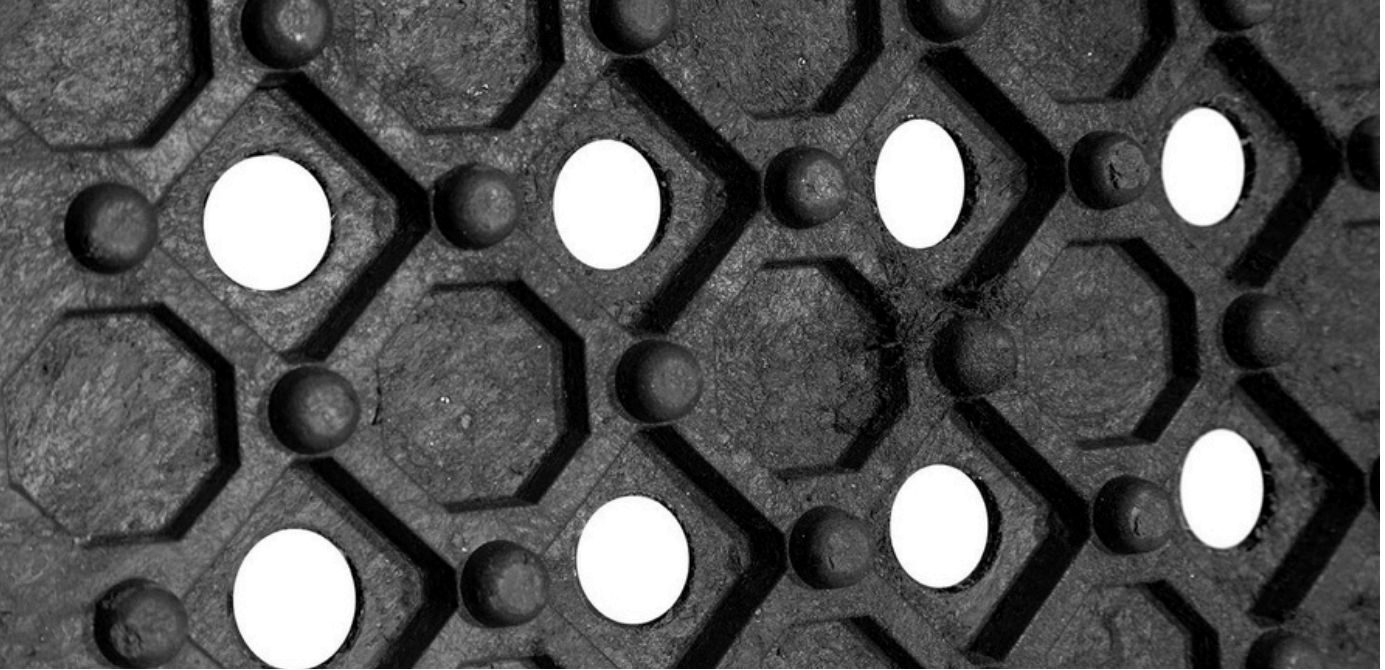
Installation:

Step One: Prepare base

Step Two: Spread a 1 to 2 inch layer of washed crushed stone, basalt, or lava rock.

- Particle size should not exceed 1/5 of an inch.
- This layer will help keep drainage open and prevent fine top footing sand to be washed through the mats.

Step Three: Place mats on top of gravel layer with knobs facing up



****THIS SIDE UP**

Step Four: Install footing as normal.

- For help with DIY footing installation- please refer to the Footing Installation guide at www.ggtfooting.com

For questions or concerns, please contact us at 864-5479-4484