

Operation & Maintenance Manual

GGT Care 57" & 80"



GGT Care 80"



GGT Care 57"

GGT Care

The purpose of this manual is to give all information needed to safely operate GGT Footing Arena Conditioner. Please read entire contents before using the machine. Failure to do so may result in injury to the operator and/or equipment.

In addition to the safety aspects included in this instruction manual, the following aspects apply:

- General safety instruction
- USA-specific regulations

Safety Symbols

Safety symbols have been placed in visible places on the machine. Damaged or unreadable symbols **MUST** be replaced.



This symbol has been placed on the box of the machine behind the engine. Read instructions carefully before working with or on the ATV Basic!



Attention Crushing



Attention Heavy Roller & Rotating Parts



Maximum Speed

GGT Care Safety

The GGT Care Arena Conditioner has been built according to the latest regulations. However, threat to people and machine can still occur if:

- the machine is not used as described in the instructions.
- the machine is used by unqualified or uninstructed individuals.
- unauthorized changes to the machine have been made.
- the safety aspects are not followed.

General Safety Warnings

- DO NOT stand next to the ATV Basic during operation.
- Riding on the machine is strictly prohibited.
- Never place yourself in the swing area, fatal danger may occur.
- Secure conditioner against rolling before leaving the machine.
- Eye protection MUST be worn at all times.
- DO NOT wear loose fitting clothes and footwear must be worn at all times.
- ALL maintenance work, repairs, and/or troubleshooting MUST be completed by a qualified technician.

Emergency Situations

In case of an emergency where danger exists for humans, animals, or machine, the operator must stop the towing device and shut off engine.

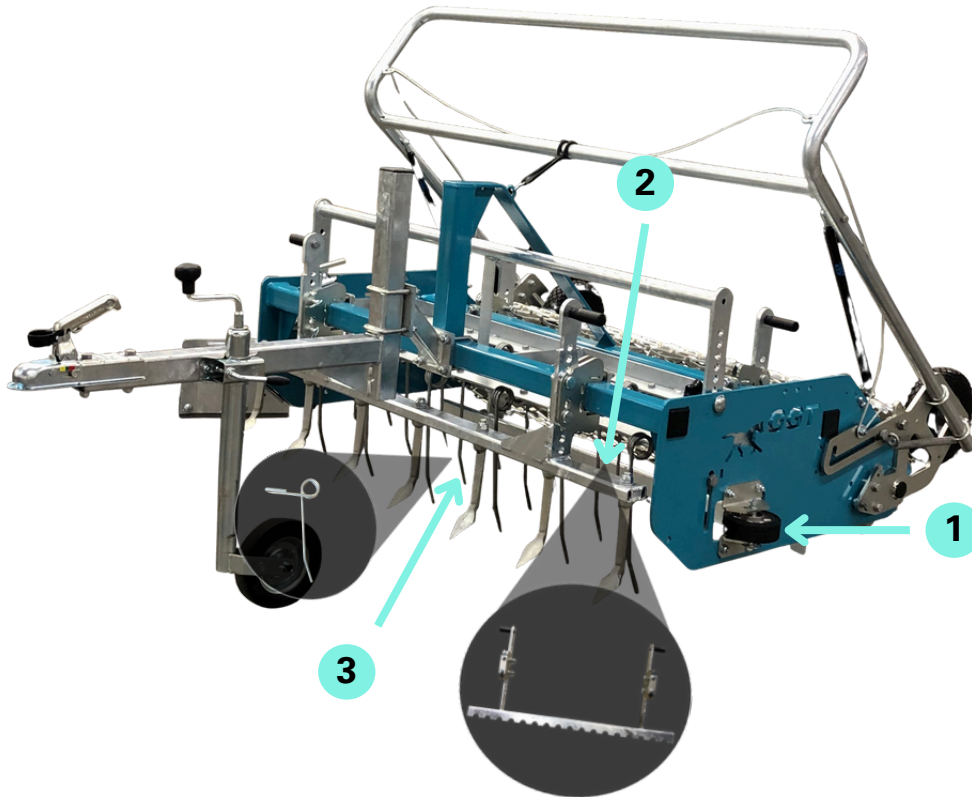
Conduct a detailed inspection for any damages to parts of the machine or machine itself.

Safety Guidelines

- The operator MUST obey all safety aspects, diagrams in this instruction manual, and safety symbols on the machine at ALL TIMES.
- While working with the conditioner, the operator must make sure that he has a good overview of the terrain and the machine itself.
- Operator must remain alert and not become distracted while using the machine.
- ALWAYS check that no animals or people are within operating range.
- It is advised against to use the machine on hills with a slope of more than 10 degrees.
- Use machine on private property only. DO NOT drive on streets or pavement.
- In the event of finding a defect, the operator is obligated to inform a technician immediately.
- Use caution when using the machine in adverse weather, such as icy, wet, or snowy conditions.

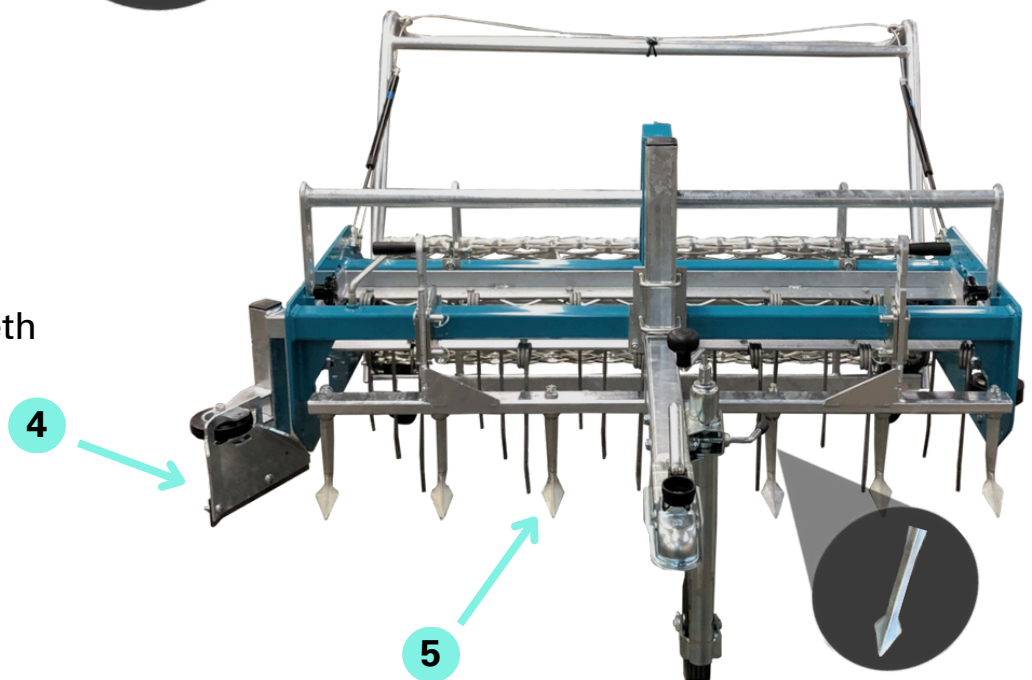
GGT Care 57" Details

Conditioner Type	Conditioner Height (Inches)	Conditioner Weight (LBS)	HP Required
GRCare57	57	538	20



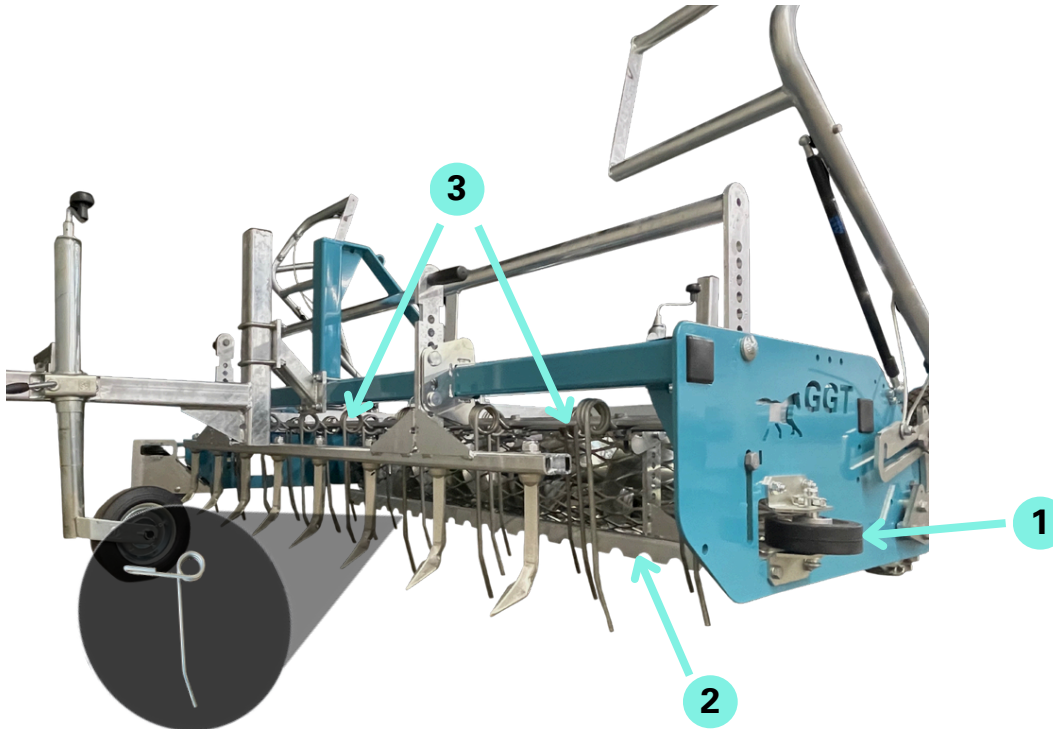
- 1: Guide Wheel
- 2: Leveling Bar
- 3: Spring Tines

- 4. Track Clearer
- 5. Deep Loosening Teeth



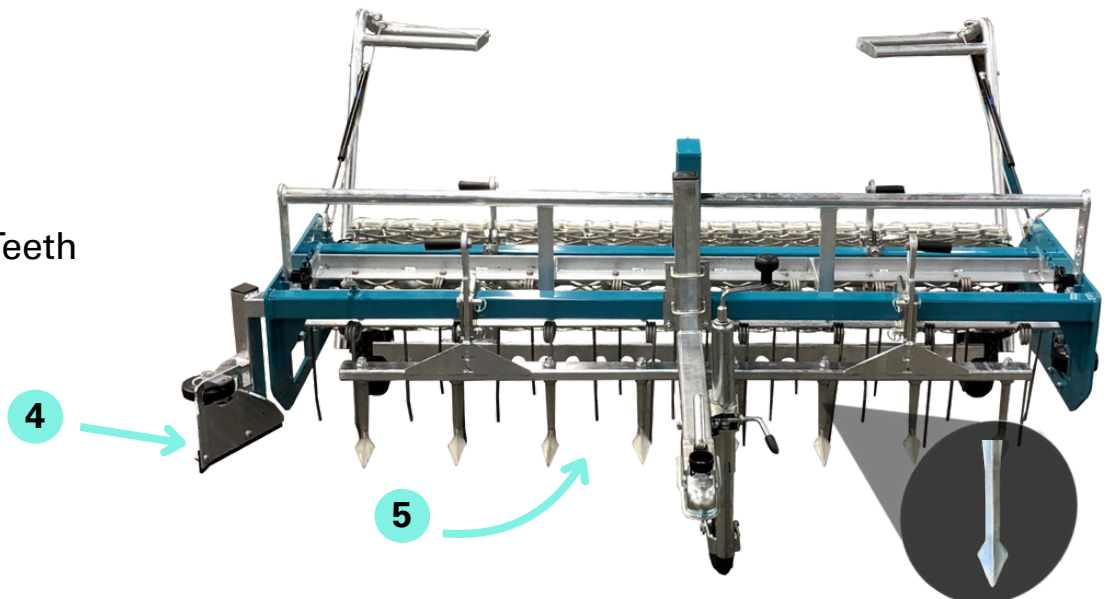
GGT Care 80" Details

Conditioner Type	Conditioner Height (Inches)	Conditioner Weight (LBS)	HP Required
GRCare80	80	681	20



- 1. Guide Wheel
- 2. Leveling Bar
- 3. Spring Tines

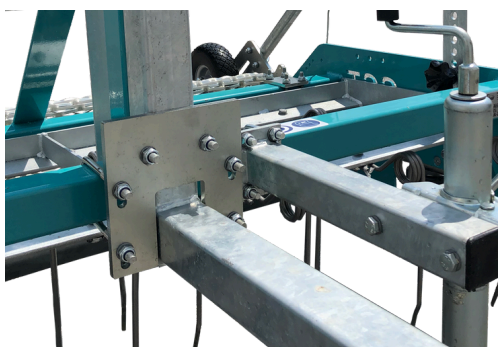
- 4. Track Clearer
- 5. Deep Loosening Teeth



GGT Care Operation

Before beginning operation, adjust the mount unit of the traction and GGT Care conditioner properly and fix it by using the clamping screw.

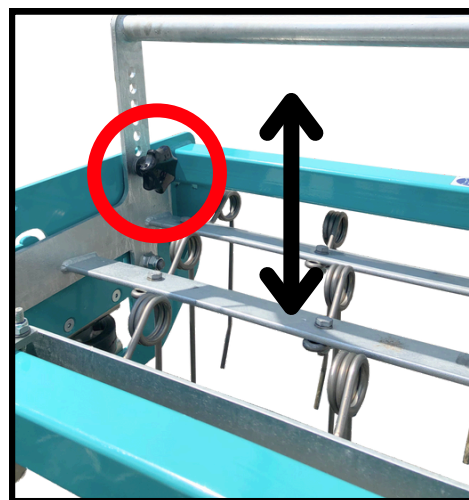
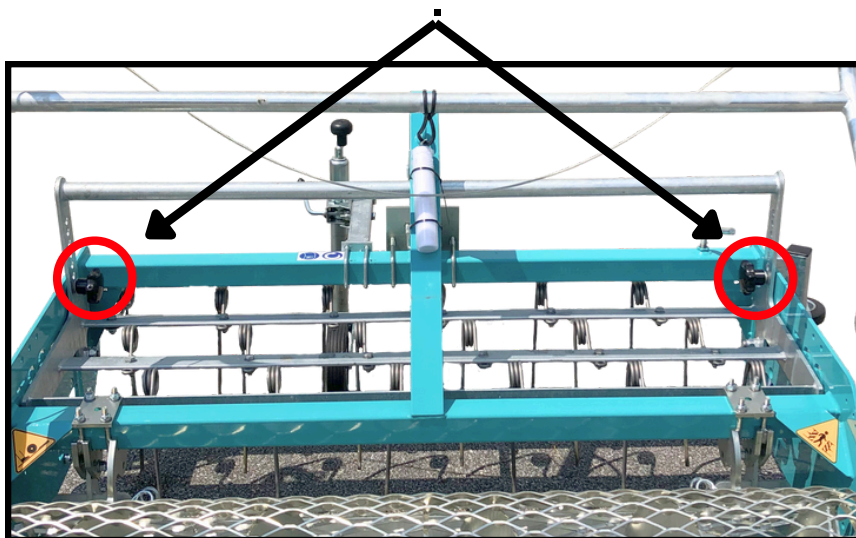
By turning of the fixture (longitudinal tube) and hitch above the basic frame. Low-lying hitches may also be used.



Adjusting the tines:

The tine depth / tine frame can be adjusted in height by loosening and repositioning the fixing screws.

To adjust tine depth, loosen and reposition the fixing screws. Once you have the preferred depth set, retighten the screws.

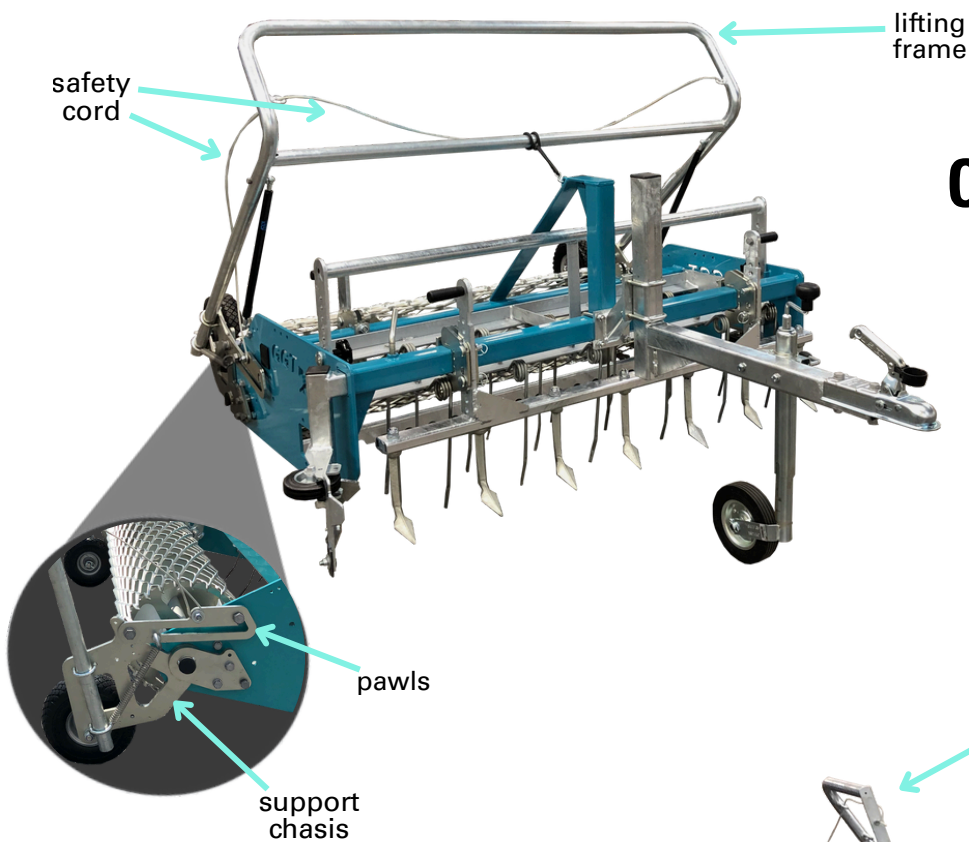


GGT Care Operation

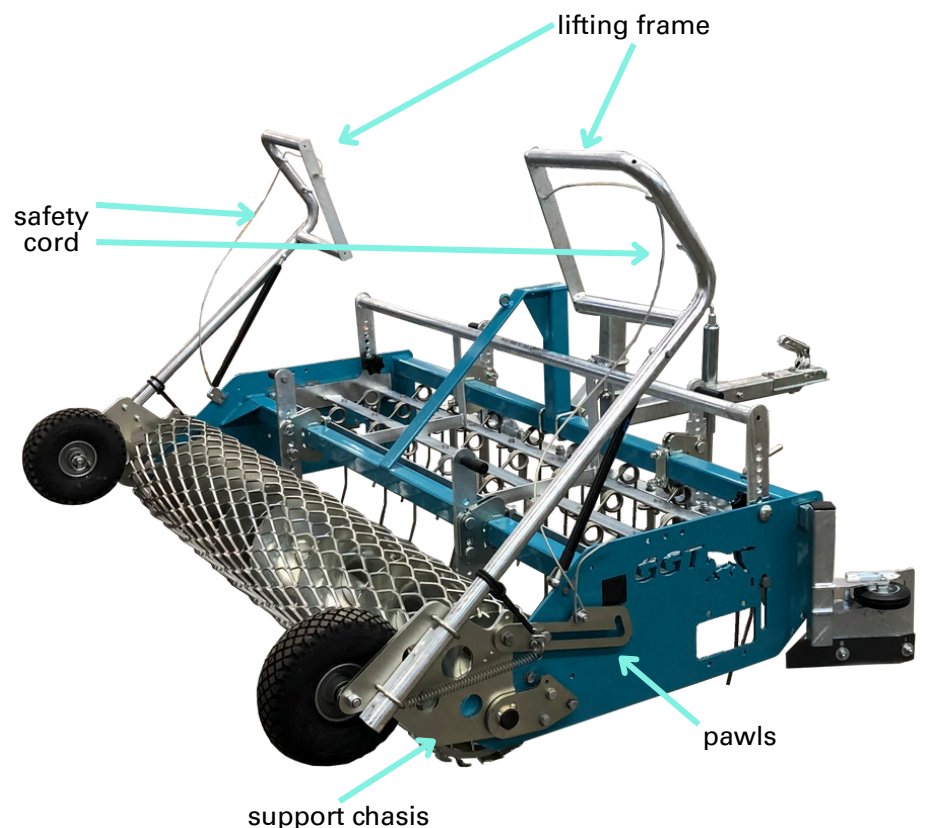
Hoisting drive:

CAUTION! Check before pulling the ratchet brace position and ensure they are properly locked into the fixing position.

Before engaging the locks, smoothly pull the lifting device and release the straight after the ratchet brace by the towing safety rope.



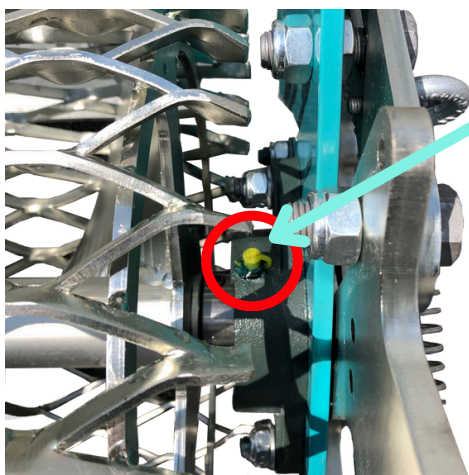
Care 57"



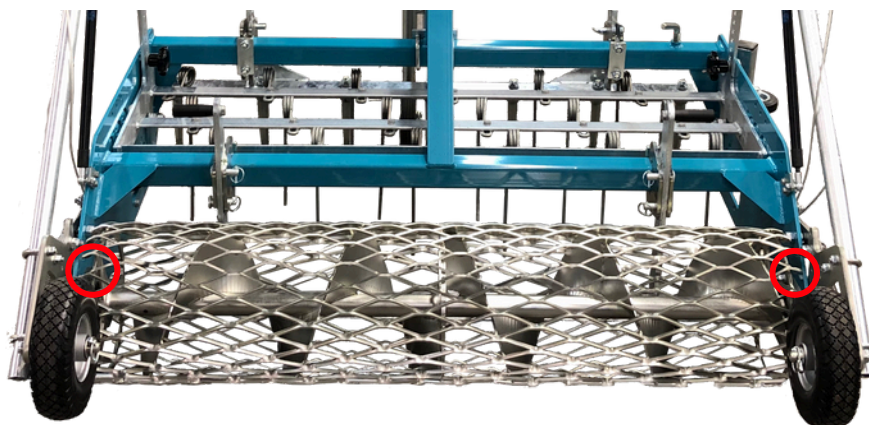
Care 80"

GGT Care Maintenance

Regular care and maintenance are important for a long service lifetime and good working quality of the GGT Care Conditioner. Regular washing of the machine is also recommended to help with more efficient maintenance.



Every 25 working hours, lubricate grease points with yellow cap as shown.



Wash running gear after checking. If required, lubricate the unit. You will also need to check the ball coupling and draw-bar at towing vehicle regularly.



General Arena Maintenance

Driving Speed:

Operator must adjust driving speed so the GGT Care conditioner can smooth any unevenness from the soil. DO NOT drive too fast, the blade will not be deposited in the soil effectively and uneven surface cannot be graded.

The perfect speed is between 3 to 7 miles per hour. On wet surfaces you should move at 7 MPH and drive slower when surface is dry.

Please note: spring steel tines need an ideal speed to complete the job effectively. If not, the tines will start to whisk.

Driving Directions:

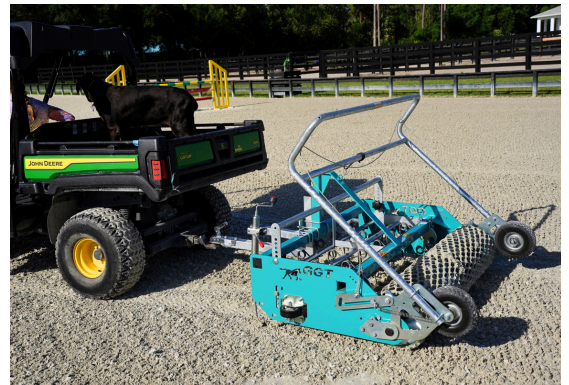
Driving direction is important to keep the ground level.

Always start with driving along outside lines as shown in fig. 1.

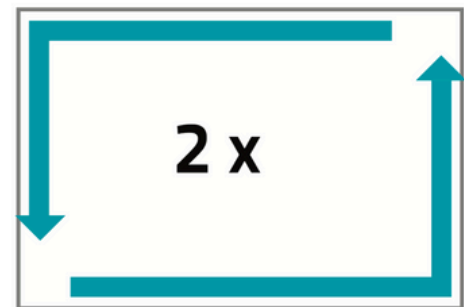
Start driving at the outside lines two times. Then towards the inner lines along the long side as wide as one track would be. If the ground is higher outside, you can push it back with the machine to the inner side when driving on the short side.

To grade waves in the ground, drive in spiral forms as shown in fig. 3.

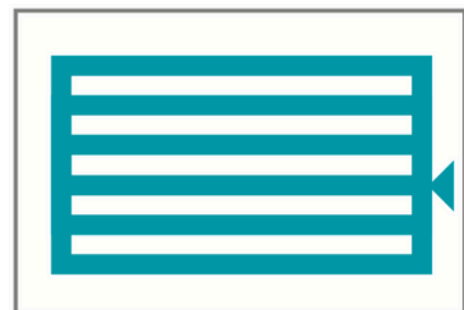
- Vary the pattern each day to prevent soil compaction.
- Use caution to ensure the tines are not going too deep if your arena has a separation layer or base mats.
- Condition daily to smooth foot prints, remove ruts, & keep the surface leveled.



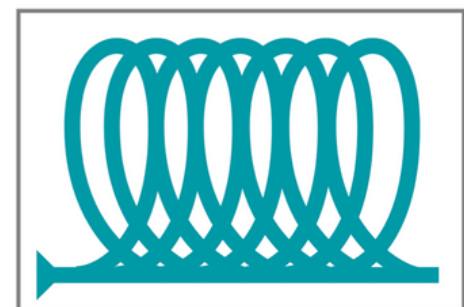
1.



2.



3.





851 Simuel Road
Spartanburg, SC 29301
USA

Call: (864) - 579 - 4484



www.ggtfooting.com